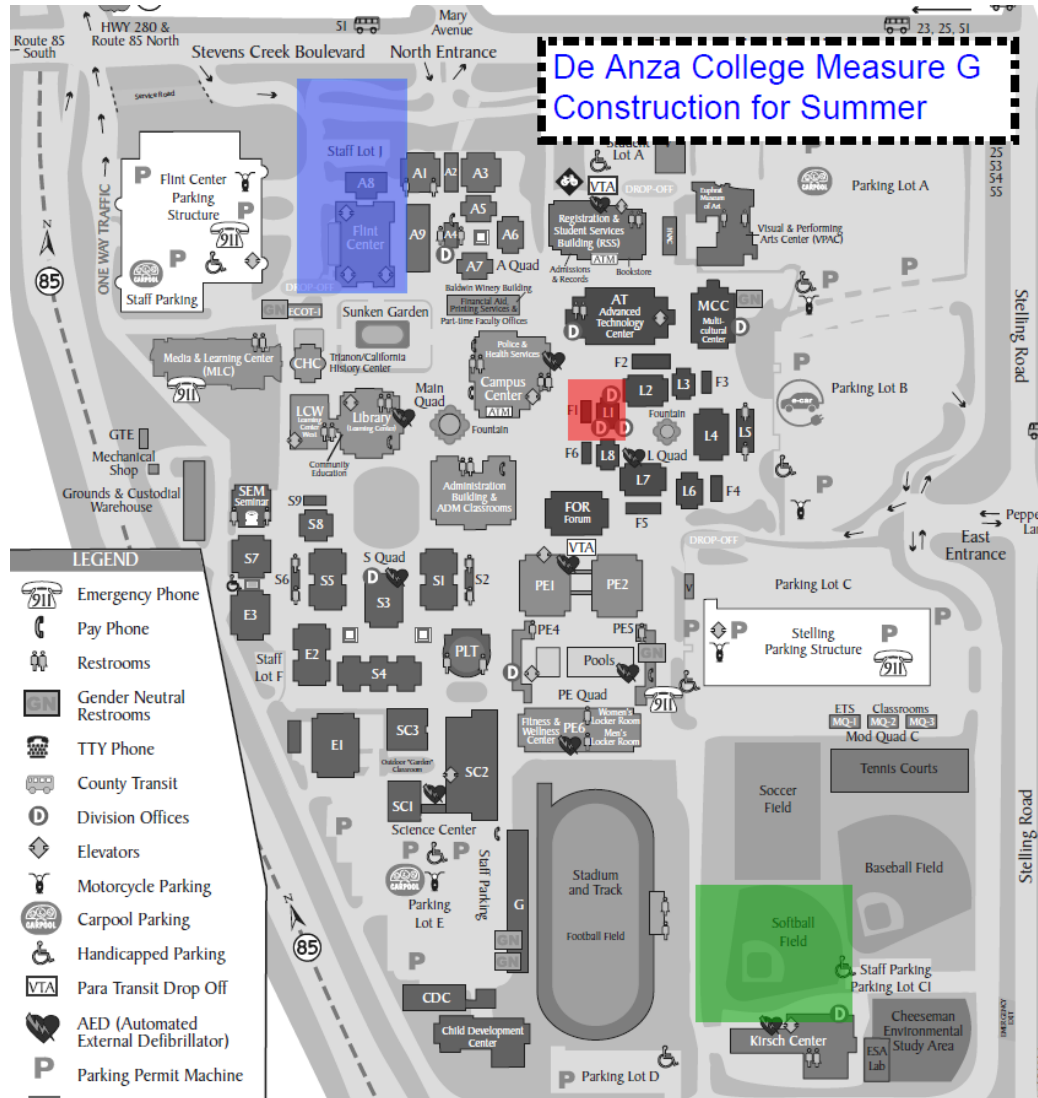


De Anza College

»»» 2024 Projects Overview & Demolition of the Flint Center Update

Measure G Bond

De Anza College Measure G 2024 Projects Overview



2024 Measure G DAC Projects Overview

509-512: Relocate Utilities – Telecom
 Status: Construction
 Target Completion – Spring 2024

***509-511: Demolition of Flint Center, Utilities & Associated Work**
 Status: Bidding
 Construction Start: March 2024

203-206: Upgrade L1 Flat Roof
 Status: Bidding
 Construction Start: Summer 2024

204: Convert Existing Facilities to Beach Volleyball
 Status: DSA Approvals
 Construction Start: Projected Summer 2024

213: Renovate Restrooms in S2, S6, & L5
 Status: Design
 Target Construction Start: Spring 2025

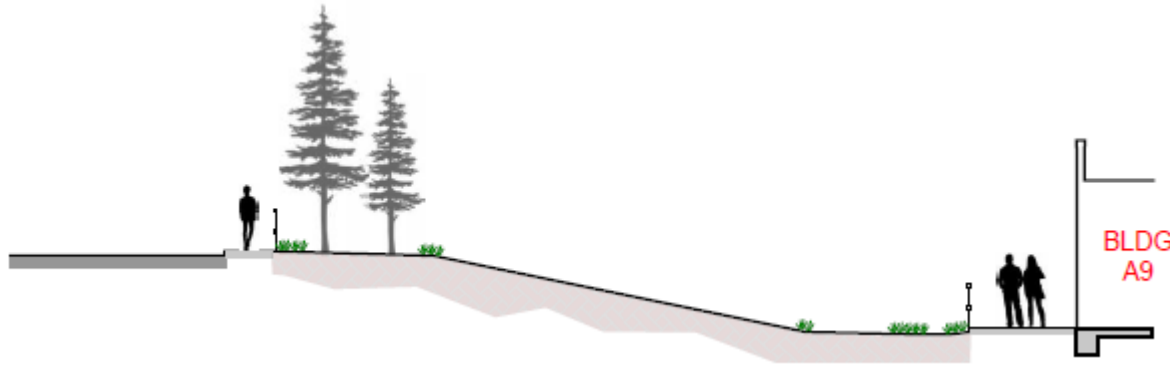
203-207: Upgrade E3, S4, and S5 Flat Roofs
 Status: Programming
 Target Construction Start: Spring 2025

509-511 Demolition of Flint Center, Utilities and Associated Work

Project Details

Preparation for and performing the demolition of Flint Center. Site and A8 improvements to provide a sloped open space with grass, lighting and fencing.

Lead Designer: Ratcliff Architects
Project Management: Gilbane Building Company
Contractor: To Be Determined



Rendering of Sloped Open Space



Photos Examples of Open Space



Flint Center

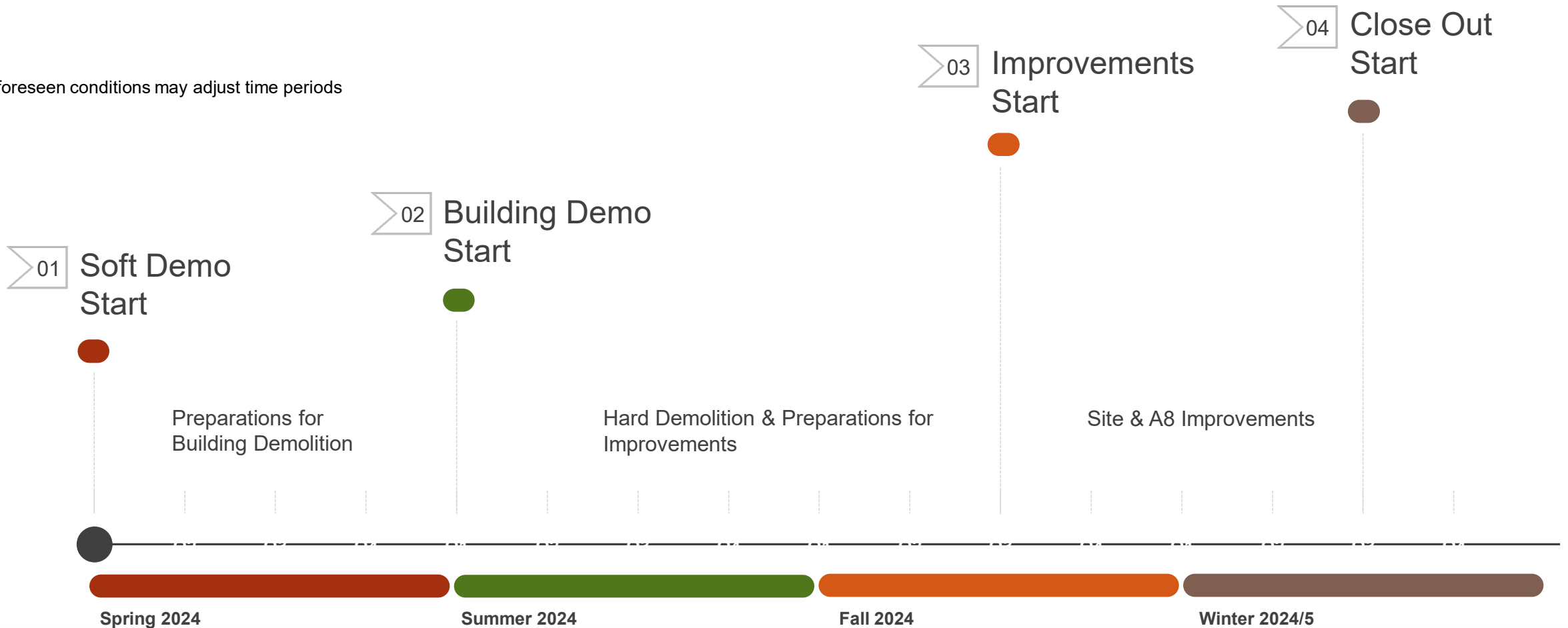
509-511 Demolition of Flint Center, Utilities and Associated Work



Construction Schedule Overview

Anticipated Overall Construction Period - Spring 2024 through Winter 2025*

*Unforeseen conditions may adjust time periods



509-511 Demolition of Flint Center, Utilities and Associated Work



DRAFT Logistics* & Examples of Expected Construction Impacts

Parking

Lot J will be closed for duration of Project Impacts to access to Flint Garage at periods of construction

Path of Travel

Closures between A1/9 & Flint Center & South of Flint Varies throughout project, Signage and Communication will be provided

Vehicular Travel

Closures or diversions at times between Stevens Creek, North and West of Flint Center

Building Access

A9 Access Closed Summer & Fall 2024
A8 Access Closed except Facilities

Construction Impacts

Noise
Vibration
Dust Mitigation
Deliveries & Trucking

***Draft Only – Contractor will provide actual logistics**

509-511 Demolition of Flint Center, Utilities and Associated Work

Example of Building Demolition Project on a Campus Setting



Source: Stanford University – Meyer Library Demolition

Safety Reminders

Members of the campus community are encouraged to follow these safety tips during Construction Periods:

- Be safe – look up from your cell phone near construction sites.
- Pay attention to your surroundings as you walk, run, bike or drive.
- Expect detours and follow the directions of the flaggers, signage, and other communications.
- Allow a little more time than usual to travel on campus.





Questions?