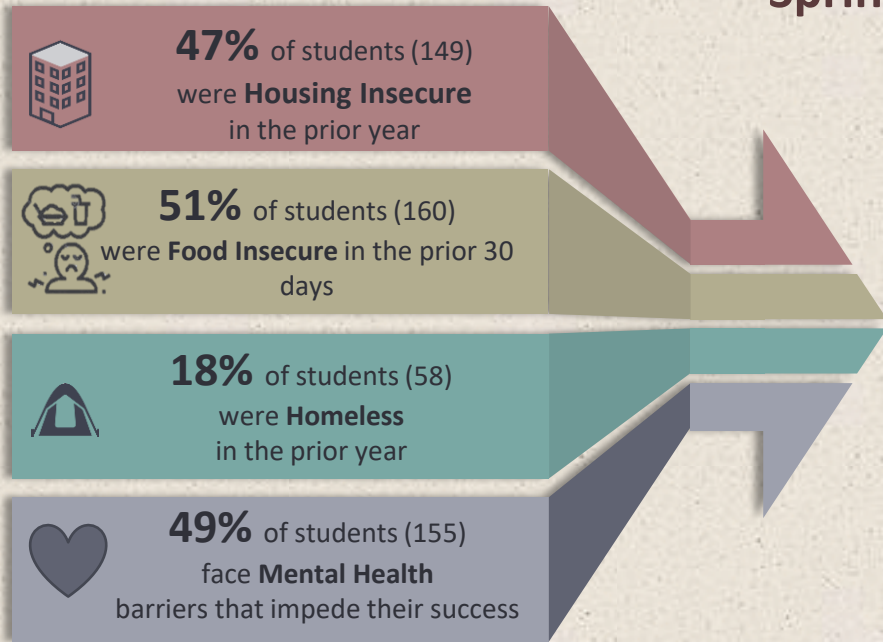
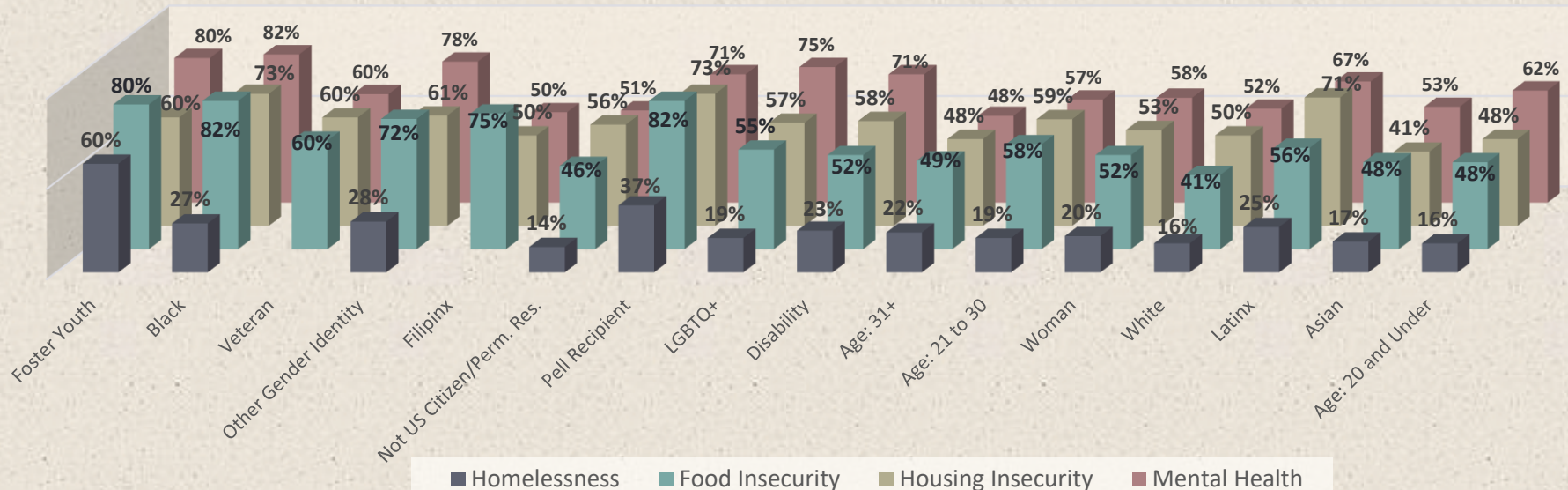
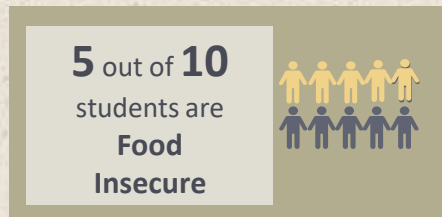
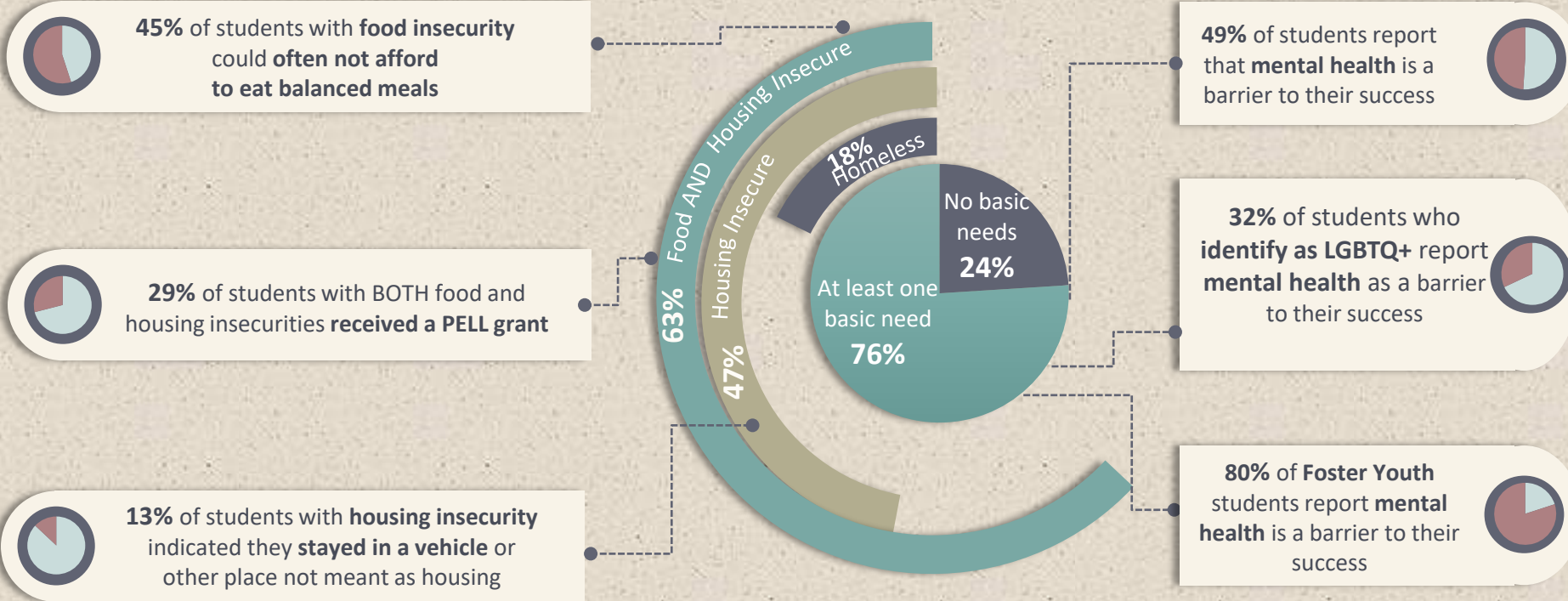


Survey of Basic Needs and Mental Health De Anza College Spring 2024

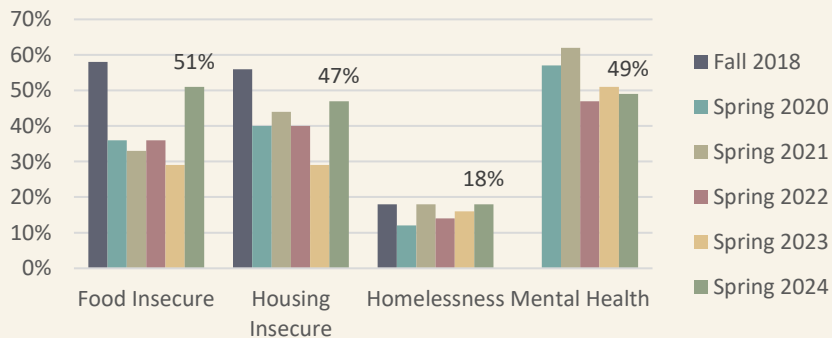


76% of respondents (238) experienced at least one form of basic needs or mental health barrier in the past year





Basic Needs & Mental Health: 2018 to 2024



Survey Background and Trends

The Basic Needs and Mental Health Survey was designed to assess food and housing insecurities and mental health as a barrier to success among De Anza students enrolled during spring 2024 quarter. The survey was administered via email and remained open for two weeks. A total of 315 responses were collected. Food and housing insecurity rates have increased from prior years, homelessness remained rather stable and mental health has decreased slightly.